



Wide aisles and strategic prep areas allow multiple cooks to work simultaneously, well out of the way of guests gathered at the island's outer sides.



gray matter

NIFTY SHADES OF
GRAY AND NATURE-
DRIVEN VIEWS GIVE
THIS KITCHEN ALLURE.

writer ANN WILSON
photographer BRIE WILLIAMS
field editor ANDREA CAUGHEY



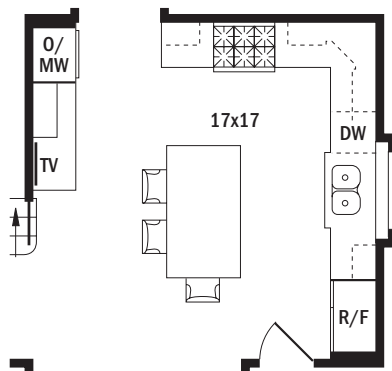
True beauty comes from within, but this kitchen gets it from the outside, too.

Anne Brade and Bill Waltz's home in Belmont, North Carolina, boasts wooded views that were just too pretty not to incorporate into the design. "We wanted a country French type of feel but with unique architectural treatments and ceilings," Anne says. "We also wanted lots of windows that would frame future gardens and nearby landscapes."

They got all that and more in the spacious kitchen that opens to a breakfast nook, a terrace, a screen porch, and a casual living space. The ceiling rises to 15 feet, and a 10-foot-tall window behind the sink pulls the eye to the verdant view.

"It was important that the kitchen feel like part of the great-room but still have its own character," residential designer Ken James says. "We maximized the impact of the ceiling by using planking to highlight its many angles and placing a tall window in a triangular gable that emphasized the window's shape."

With the outline in place, Anne and Bill worked with kitchen designer Caren Bistany to shape an island-centered layout that easily accommodates two chefs and plenty of guests. Interior designer Patti Schulte selected finishes and surfaces that carry the natural rhythms and neutral palettes seen elsewhere in the house.



ABOVE LEFT: Wooded views make dish duty more enjoyable. The natural flecks of color in the Delicatus granite countertop pick up the tones of the gray cabinetry and black island. **OPPOSITE:** Limestonelike Italian porcelain tiles provide a style-apt floor that stands up to daily wear.





“We chose that taupe-gray cabinet finish to bring drama and depth to the kitchen.”

Caren Bistany
kitchen designer

“I kept going back to monochromatic and neutral,” Anne says. “I wanted colors and materials that mimicked sand and ocean and were calming. I had seen those cabinets in a book, and I loved them because of their trim details.”

Anne and Bill settled on a taupe-gray cabinet finish, which in turn drove the selection of complementary granite countertops, the island’s black-stained finish, the slate backsplash treatment, porcelain floor tiles, and stainless-steel fittings.

“We wanted a very refined look with classical elements that worked with all the surprises, such as the backsplash, ceiling, and window,” Bistany says. The island bears the influence of farmhouse tables with legs that support an extended breakfast-bar countertop. Nostalgic dresser pulls further the cabinetry’s fine-furniture character.

The thoughtful mix of vintage elements, classic cabinet profiles, ultramodern tiles, and shimmering silhouettes provides the couple with something lovely to look at on every wall. “I like things that juxtapose with each other and spaces that are a combination of our personalities,” Anne says. “Our kitchen is that type of unique expression—a very nice blend that has people saying ‘Wow!’ when they see it for the first time.” **KBI**

RESOURCES BEGIN ON PAGE 138.



OPPOSITE TOP: Custom-cut slate tiles weave interest through a mix of rectangular and square shapes on the backsplash. **OPPOSITE, BOTTOM LEFT:** A glaze applied by hand over the painted finish gives maple cabinets and refrigerator panels depth. **OPPOSITE, BOTTOM RIGHT:** The furniture-style island stands out in dramatic black. **THIS PHOTO:** At one end of the kitchen, a function-packed wall corals a microwave, oven, and warming drawer, plus abundant storage.



bright idea

Maximize storage space with deep drawers instead of standard base cabinets.

